

Voice Link EasyTAPI 4.0.0 Installation Guide

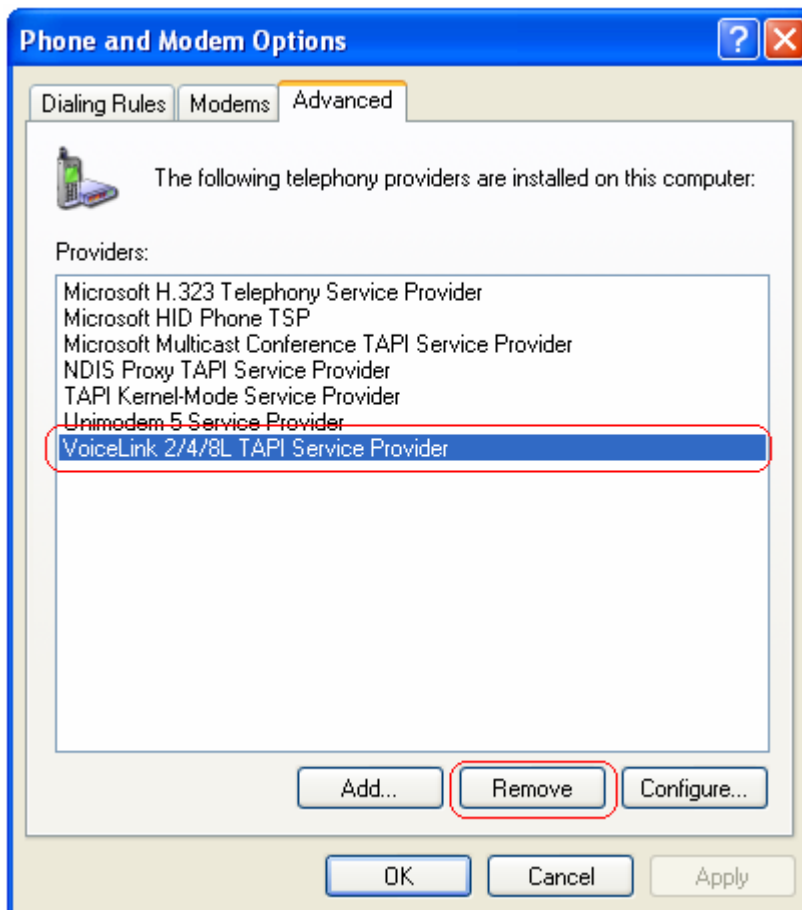
(The New Rev. of hardware needs to work with new driver. If this is a new installation and you have not installed a previous version of the Voice Link EasyTAPI driver, you can skip STEP ONE)

STEP ONE: Remove the Old version of driver

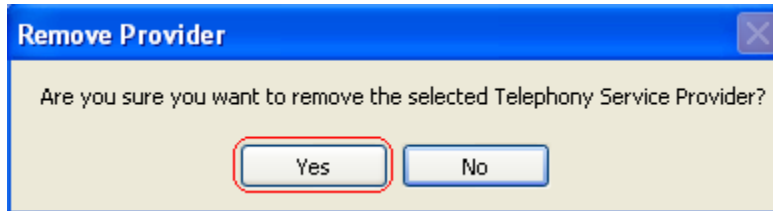
1 Remove TSP

If the PC has a previous version of Voice Link EasyTAPI please click “**Start Menu**”, Select “**Control Panel**” double click “**Phone and Modem Option**”. If the item “Voice Link 2/4/8L TAPI Service Provider” exists, click and select it, click on “Remove”.

(Ignore this step if the item does not exist).

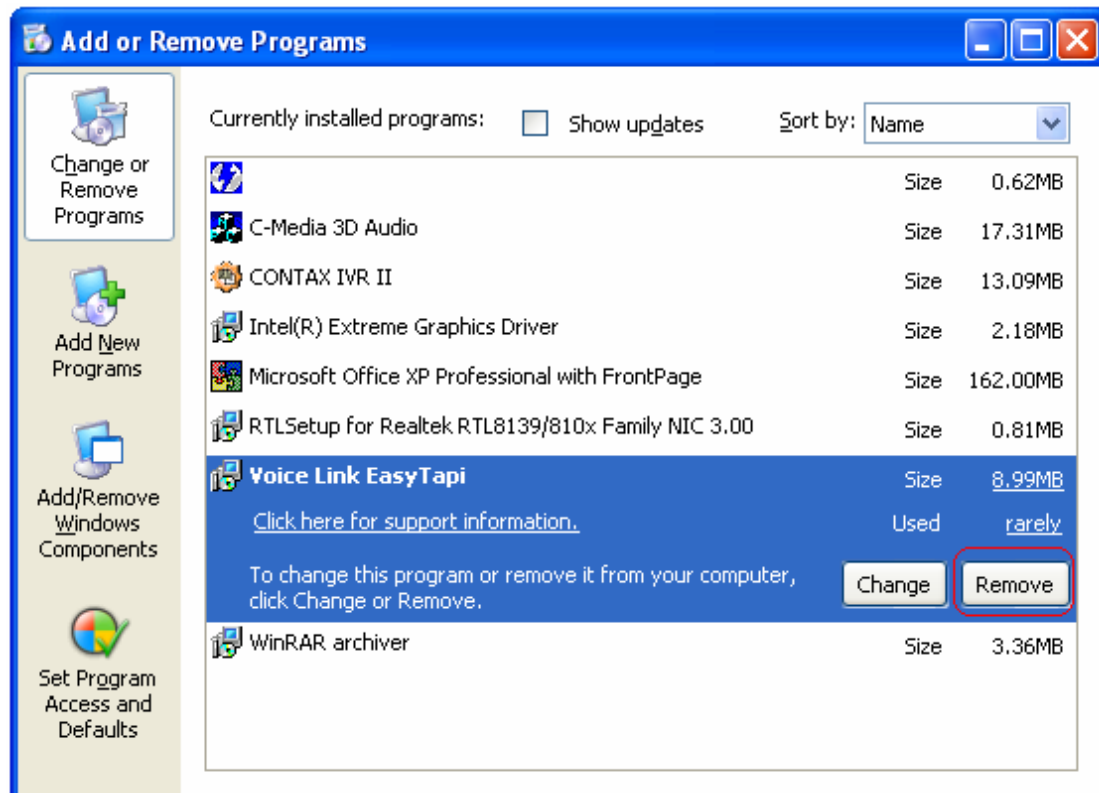


At the pop-up dialog box, select “Yes”



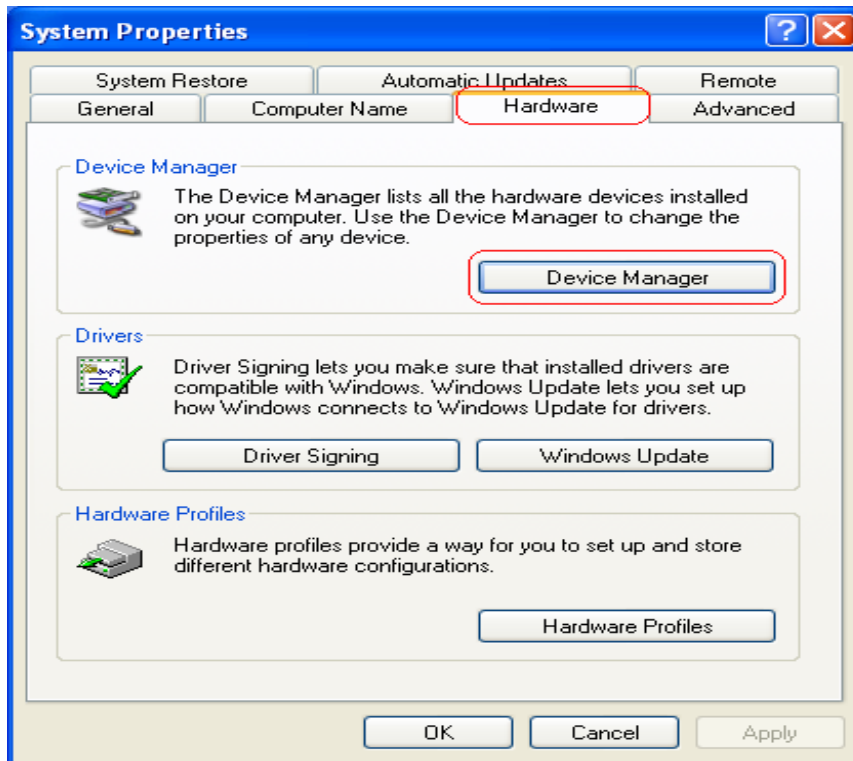
2 Remove Voice Link EasyTapi

If the PC already has a previous version of Voice Link EasyTAPI, please click “**Start Menu**”, Select “**Control Panel**” double click “**Add or Remove Programs**”. If the “Voice Link EasyTapi” item exists, select it, click on ”Remove” button. (Ignore this step if this item does not exist).

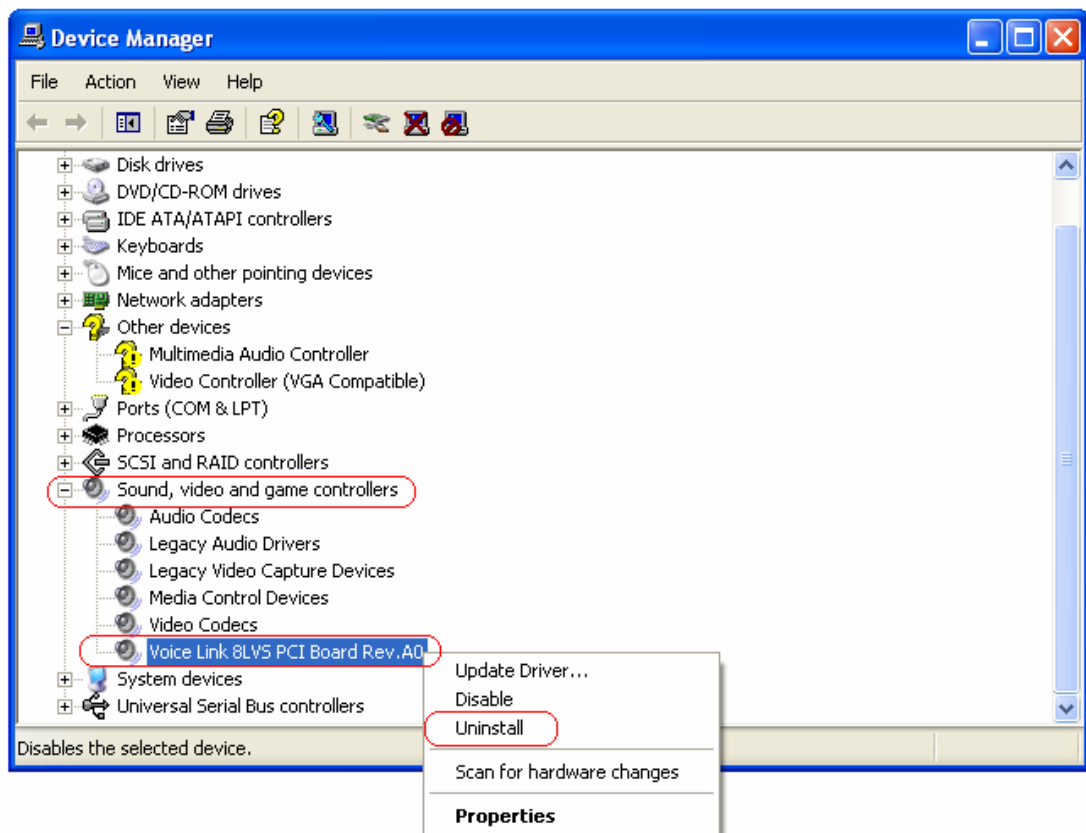


3 Uninstall the Voice Link Device(s)

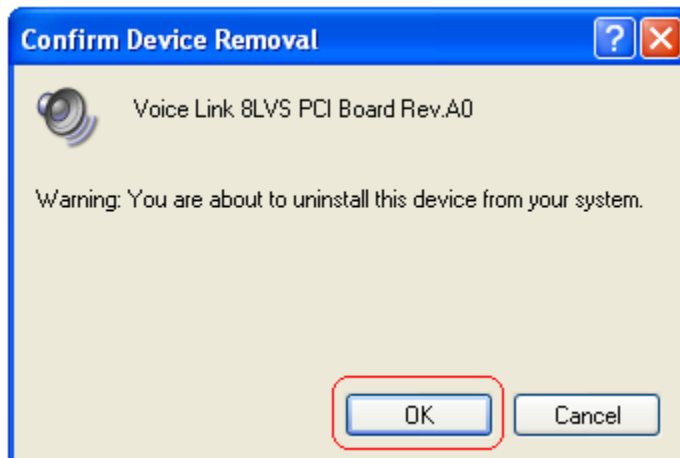
3.1 Right-click mouse key on “**My Computer**”, Select “**Properties**”, then “**Hardware**” then single click “**Device Manager**”



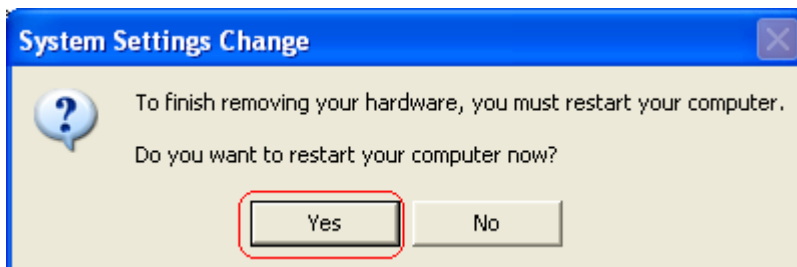
- 3.2 Select “sound, video and game controllers” Right click mouse key on “Voice Link 8LVS PCI Board Rev.A0” , Select “Uninstall”
If there’s no such device, Skip this step



3.3 At the pop-up dialog box, Click “OK”



3.4 After the uninstall, select “Yes” to restart the PC



3.5 The PC will re-boot

STEP TWO Install New Voice Link EasyTAPI 4.0.0

1 When Windows restarts, you will see “Find New Hardware” dialog box, please click “Cancel”

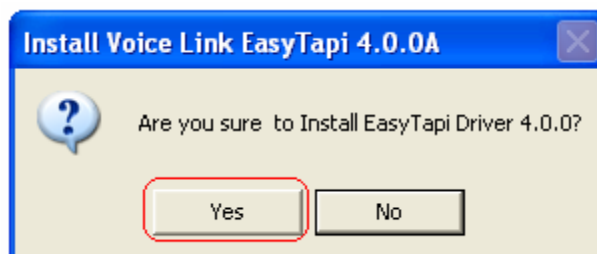
NOTE - The number of “Find New Hardware” dialog boxes should match the number of Voice Boards

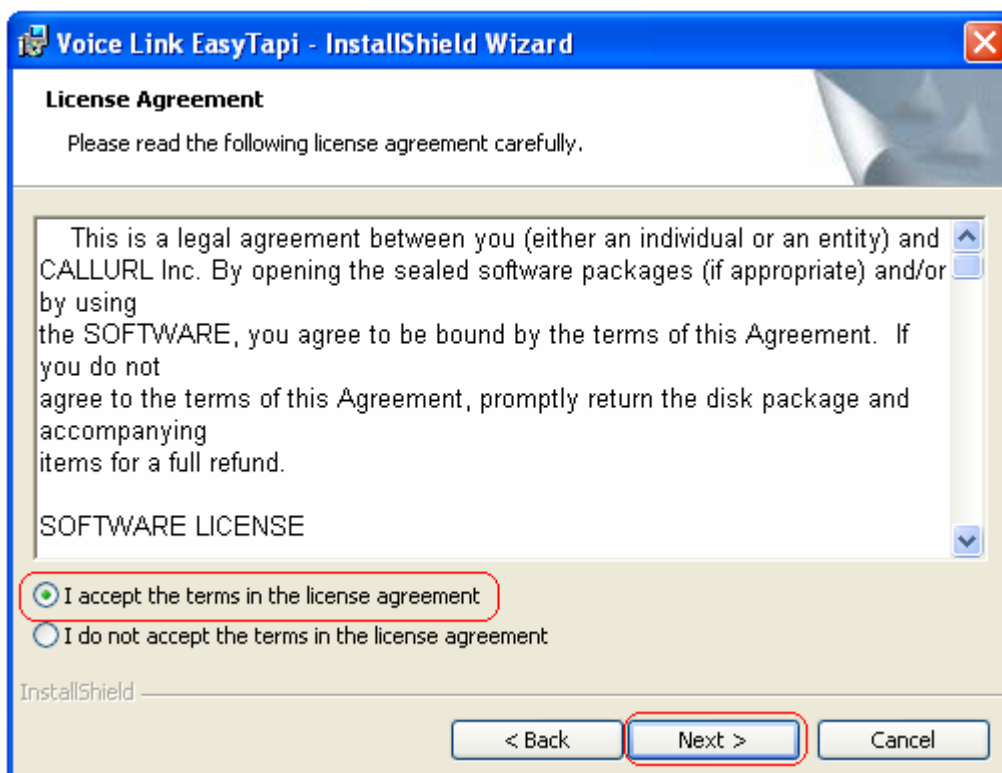
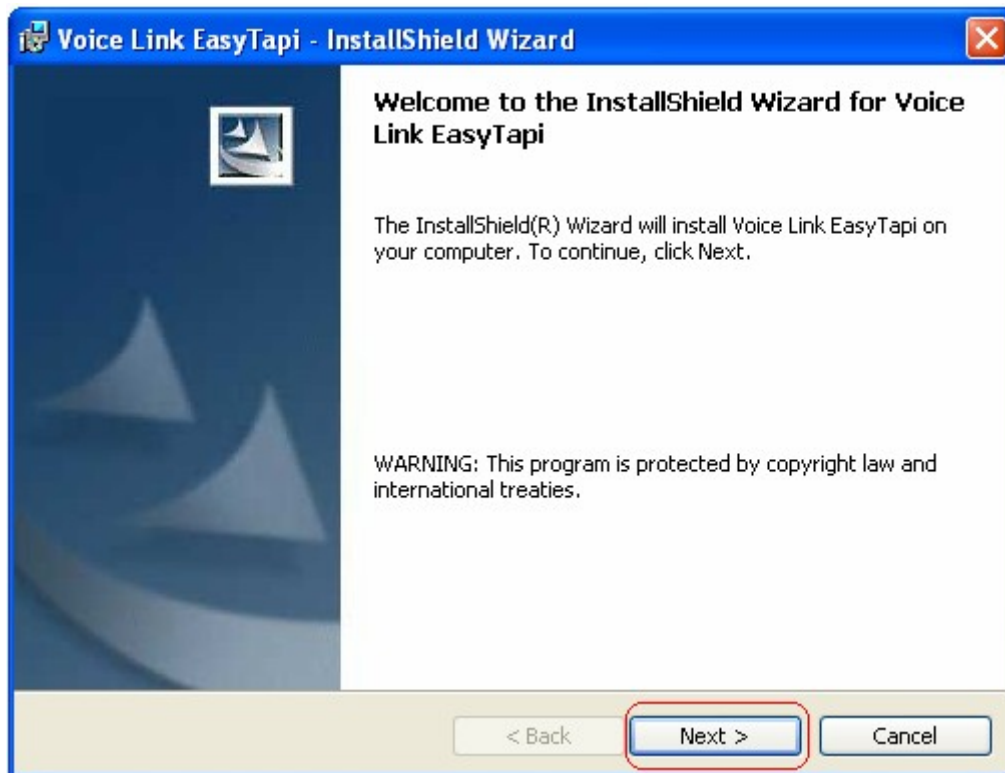


- 2 Insert the EastTAPI Installation CD, it should run automatically. (If it did not, go to "CD-ROM" double-click "AutoRun.exe" Select "Install EasyTapi Driver 4.0.0"



- 3 Follow the InstallShield Wizard as shown below





Voice Link EasyTapi - InstallShield Wizard

Customer Information

Please enter your information.

User Name:
CallURL

Organization:
CallURL

Install this application for:

Anyone who uses this computer (all users)

Only for me (PCXVL)

InstallShield


< Back **Next >** Cancel


Voice Link EasyTapi - InstallShield Wizard

Setup Type

Choose the setup type that best suits your needs.

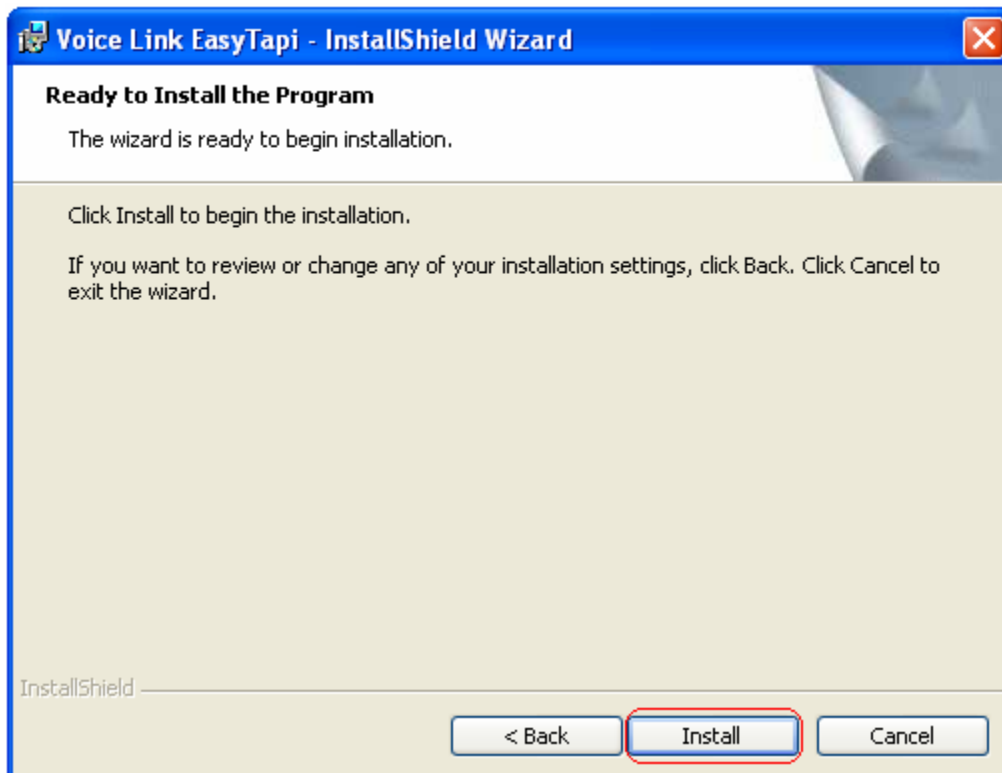
Please select a setup type.

Complete
 All program features will be installed. (Requires the most disk space.)

Custom
 Choose which program features you want installed and where they will be installed. Recommended for advanced users.

InstallShield

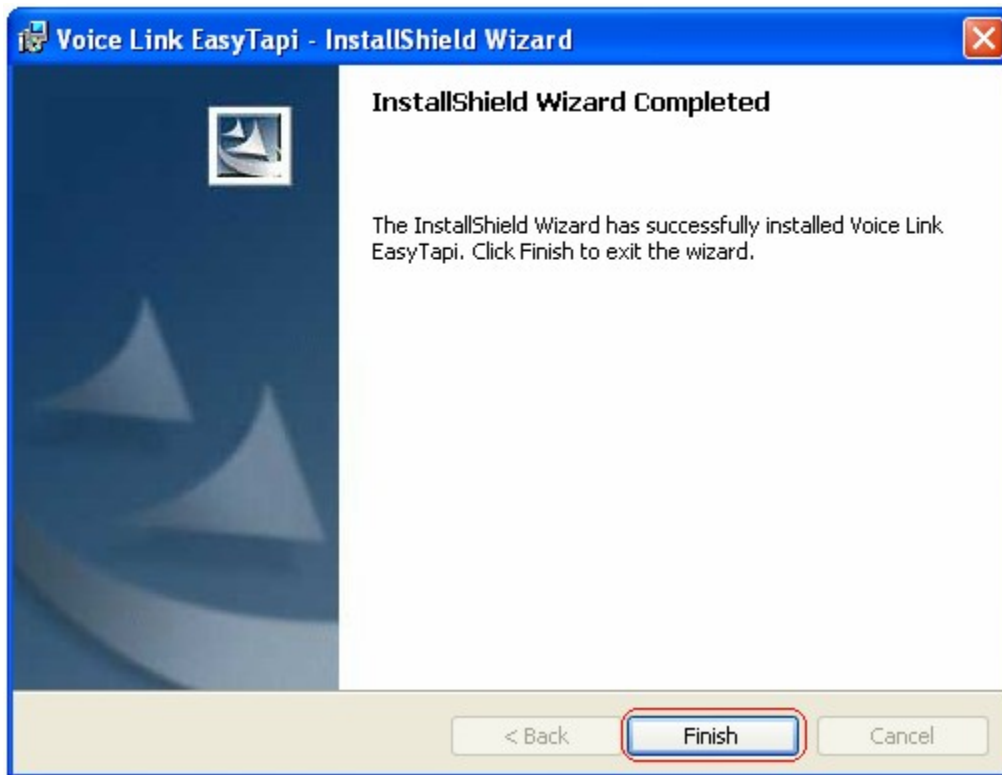
< Back **Next >** Cancel



- 4 During the installation process, when prompted with a Windows warning message, just click “Continue Anyway”

NOTE - Depending on the number of Voice Boards, you will see the same number of warning messages (one per board installation)





- 5 Restart the PC when the installation is completed